

# 61" CAST IRON SLIPPER TUB

Cat. No.  
CTSN60



L: 61 1/4"  
W: 30 1/4"  
H: 21 1/2" & 31" (from floor to top of tub)  
15 1/2" & 23 3/4" (from bottom of tub to top of tub)

**The following is recommended for CTSN60 tubs without deck holes:**

- Faucets: part #4602
- Rigid, freestanding supplies: part #4502
- Leg tub drain: part #5599

Gallon Capacity: 45 1/2  
Shipping Weight: 500 lbs.  
Empty Weight: 300 lbs.  
Filled Weight: 679 lbs.

## Features:

- ▶ Inside finish is white enamel
- ▶ Ball and claw reet available in 6 finishes or unfinished
- ▶ Tub exterior is white (epoxy)
- ▶ No faucet holes
- ▶ Non-skid strips
- ▶ Feet are attached and leveled before shipment
- ▶ Tub is thoroughly inspected before shipment

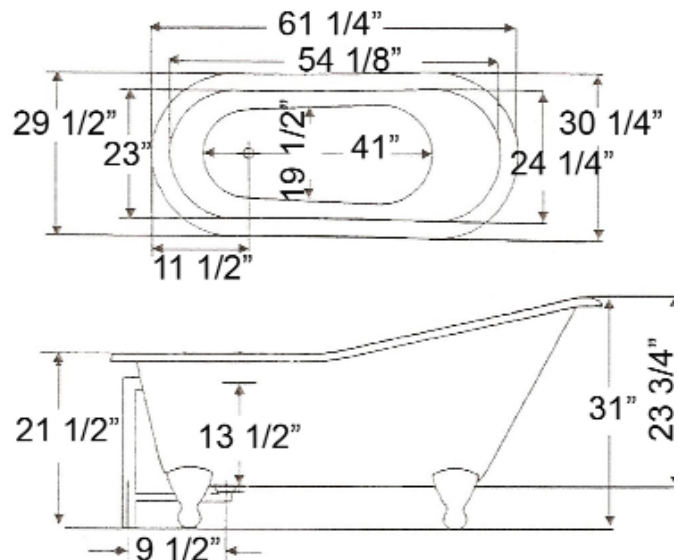
## Foot Finishes:

- BP** Polished Brass
- CP** Polished Chrome
- PN** Polished Nickel
- SN** Brushed Nickel
- WH** White
- ORB** Oil-rubbed Bronze

Meets or exceeds the following specifications: A112-19-1M 1994.

### **Extra Paint Charge** (inside of tub is always white enamel):

**Bisque Paint** - \$160                      **Black Paint** - \$160  
Bathtubs painted in bisque or black are considered "special order" and are not returnable.



Dimensions of fixture are nominal and may vary within the range of tolerances established by ANSI Standard A112.19.1M. Dimensions and specifications subject to change without notice.